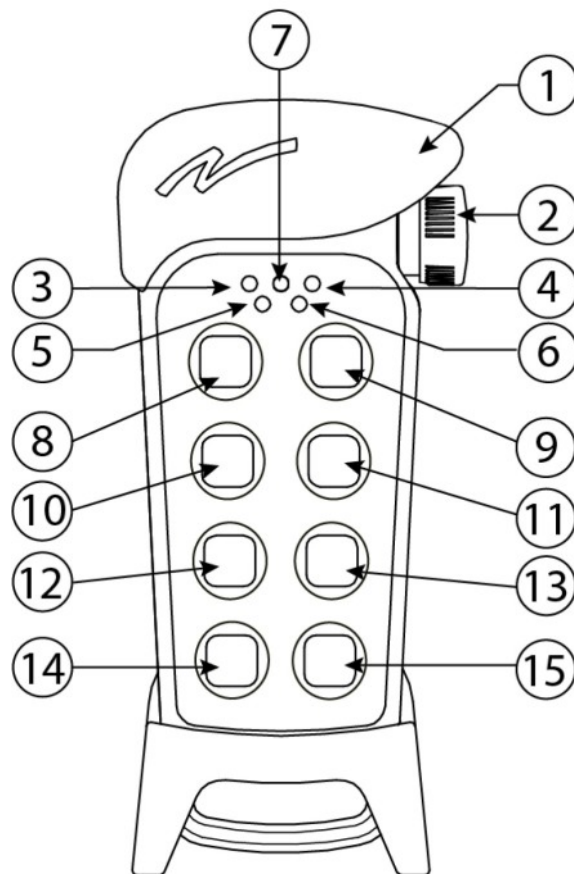




## Start-up and operation

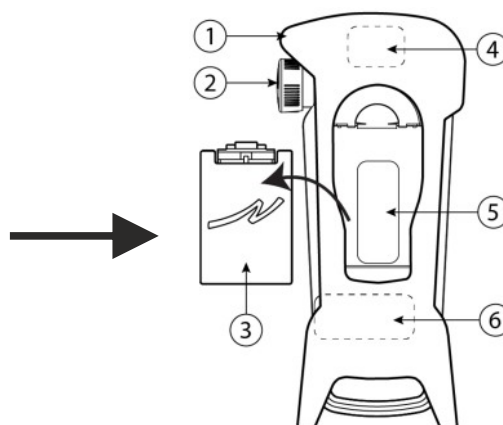
1. unfold the conveyor belts (Caution: Do not stand underneath!)
2. clear the danger zone
3. connect the power supply (CEE 16A) or start the generator
4. switch on the main switch
5. check emergency stop circuit
6. Turn and pull the emergency stop button (2)
7. To pair the remote control, press and hold buttons (14) and (15) simultaneously for three seconds. LED (5) and (6) will flash.
8. Switch to 'Work' by pressing the button (15). LED (4) lights up green.
9. Press "Stop" (9) for 3 seconds (red LED on the machine control panel goes out, green LED flashes, machine is ready.)
10. Start and stop the machine using buttons (8) and (9)
11. Switch to 'Drive' by pressing button (15). LED (4) lights up green. Driving using the buttons (10, 11, 12, 13)

Switch off the remote control by pressing the emergency stop button (2).



## Change battery

1. Pull out battery (3) on the backside.
2. Remove the replacement battery from the charging cradle in the control cabinet and replace it.



gremac.net

# GREMAC

Service • Spare parts

+49-(0) 90 73 - 4 03 98 70



whatsapp