

Installation Instructions

Dichtmanschette / Sealing Sleeve

GREMAC eZero | GREMAC e1 | GREMAC e2+

Document Information

Document No.: **D858.L51**
 Component: **Sealing Sleeve (pre-assembled)**
 Applies to: **GREMAC eZero, GREMAC e1, GREMAC e2+**

The sealing sleeve is delivered as a pre-assembled unit. The tension strap is already attached to the centre of the sleeve. Follow the steps below to install it on the machine.

Technical Drawing

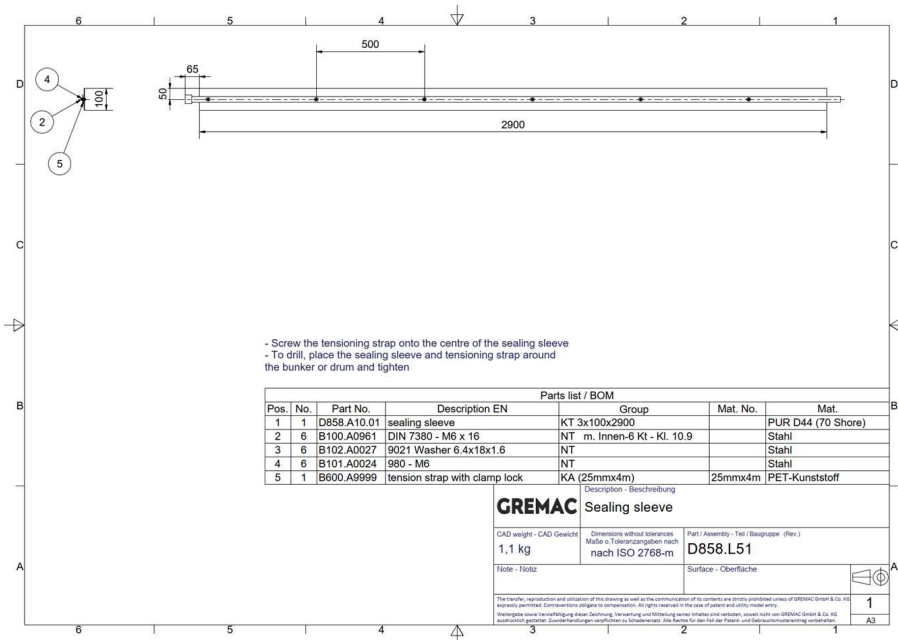


Fig. 1: Technical drawing sealing sleeve D858.L51

Installation on the Machine

1. Place the pre-assembled sealing sleeve with the tension strap around the bunker or drum.

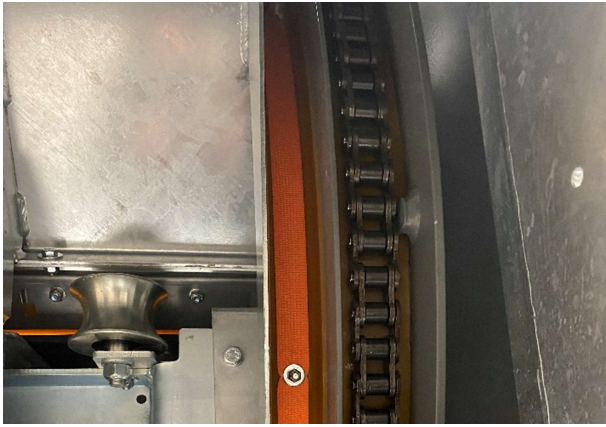


Fig. 2: Place sealing sleeve around the bunker

2. Tighten the tension strap so that the sealing sleeve fits evenly and without wrinkles against the bunker.



Fig. 3: Tighten the tension strap

3. Position the buckle of the tension strap in the red marked area (see figure).

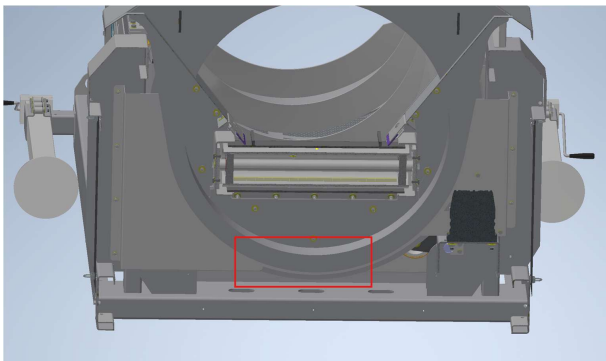


Fig. 4: Position of the buckle (red marked area)

4. Position the tightened buckle underneath the bunker.

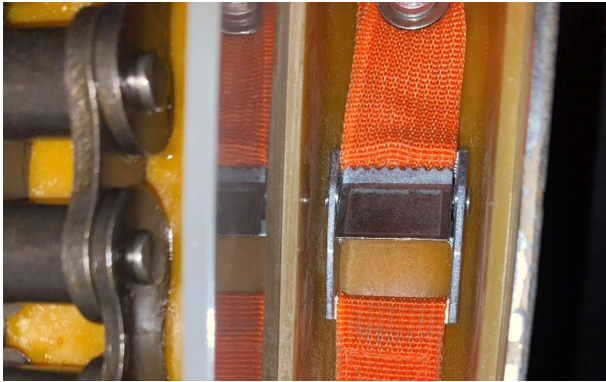


Fig. 5: Buckle positioned underneath the bunker

5. Drill through the bunker and secure the strap with a screw and cable ties. The drill hole prevents the sleeve from slipping during operation.

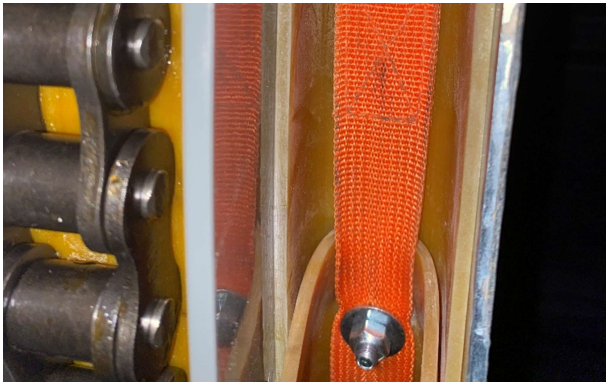


Fig. 6: Drilling through the bunker and securing with screw

6. Check the correct fit of the sealing sleeve. The sleeve must fit evenly all around and must not be twisted.



Fig. 7: Installed sealing sleeve - fastening detail

Important Notes

- The sealing sleeve is delivered as a fully pre-assembled unit. Do not disassemble.
- Clean the contact surfaces on the bunker before installation.
- The sleeve must fit evenly and without wrinkles.
- Do not over-tighten the tension strap to avoid damaging the sleeve.
- The drill hole through the bunker is necessary to prevent slipping during operation.
- After installation, check the secure fit of all components.
- In case of wear or damage, replace the complete assembly.